

# **Networking for Community Based Inclusive Development (CBID) Training**

## **Introduction**



# Introduction to the CBID Training

- House (ground) rules
- Car park

# **The reality for persons with disabilities**

- Persons with disabilities in society today – in every country of the world and most especially in less-developed countries – regularly and routinely face:
  - Unfairness
  - Injustice
  - Exclusion

# Barriers



# Vicious cycle between poverty and disability



# Human rights

- Provide legal guarantees of protection.
- Apply to everyone, regardless of race, sex, ethnic or social origin, religion, language, nationality, age, disability or any other status.
- Are a natural part of being human.
- Cannot be taken away or given up.

# UN CRPD

- United Nations Convention on the Rights of Persons with Disabilities.
- First human rights treaty of this millennium.
- Catalyst in shift from viewing persons with disabilities as objects of charity to persons with equal rights.

# The CBID strategy

- A rights-based strategy to meet the basic needs of persons with disabilities and promote their full inclusion in all aspects of society.



# The CBID strategy

- A multisectoral practical strategy to achieve inclusion.
- The strategy to achieve the rights enshrined in the UN CRPD.
- The CBID strategy provides for the practical implementation of the UN CRPD at community level.
- Engages society to remove barriers.

# Terminology

- Community Based Rehabilitation (CBR)
- Community Based Inclusive Development (CBID)

# From CBR to CBID



**HEALTH**

# From CBR to CBID

**LIVELIHOOD**

**SOCIAL**

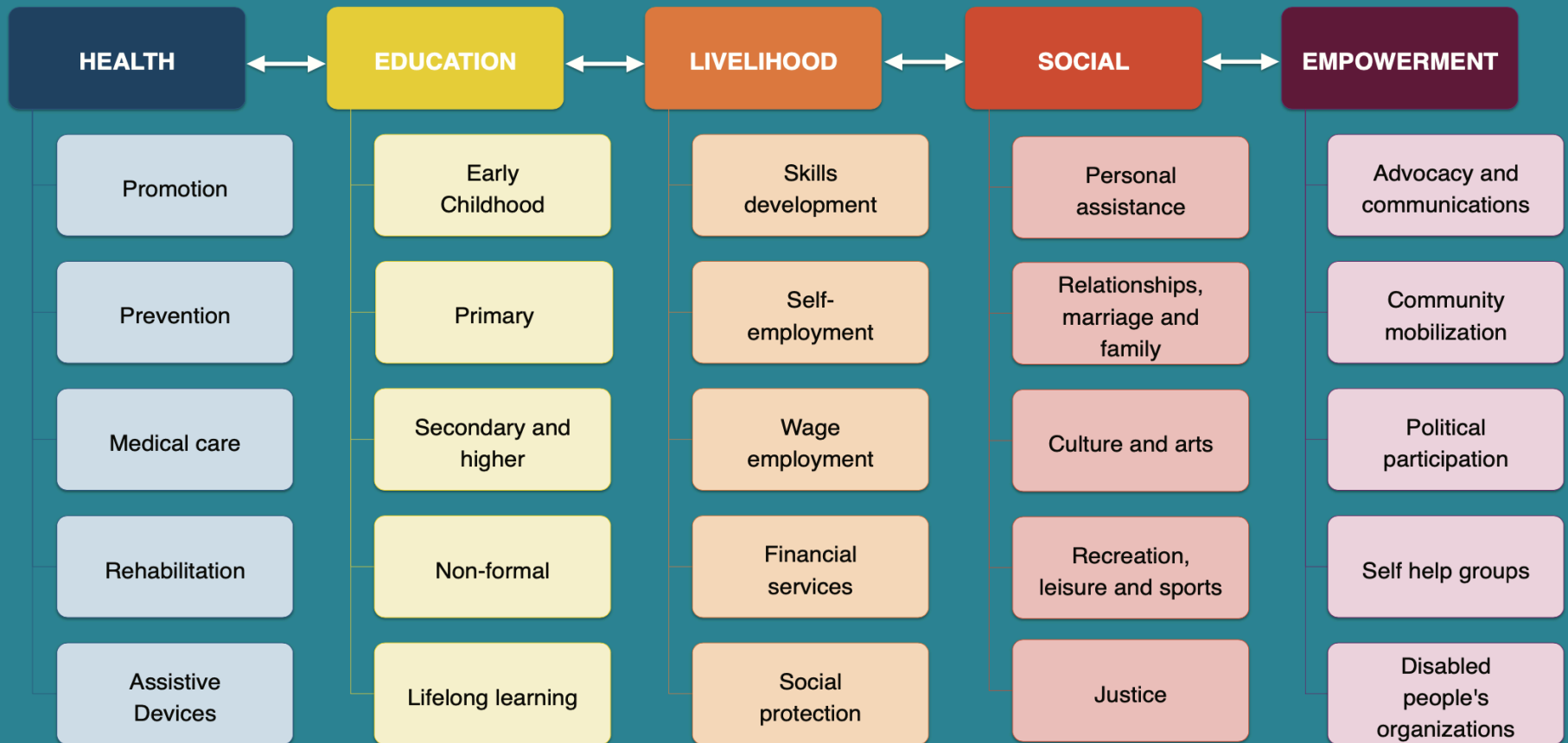
**HEALTH**

**EMPOWERMENT**

**EDUCATION**

# From CBR to CBID

## CBR MATRIX



# From CBR to CBID

- The use of the word 'rehabilitation' in the CBR title may imply that interventions are still focused only on clinical areas.
- Clinical rehabilitation remains a vital aspect but is one of many interventions required.

# From CBR to CBID

- CBR is a term that some development stakeholders, may still view as a medical only strategy.
- There are also CBR programmes whose approach remains very traditionally in the medical field who further fuel this perspective of CBR.



# From CBR to CBID

- Inclusive development is a global strategy that development stakeholders identify with and see as their responsibility.
- Therefore, by using the term CBID in place of CBR, we can more strongly encourage everyone to take responsibility for the inclusion of all.



# Training package objectives

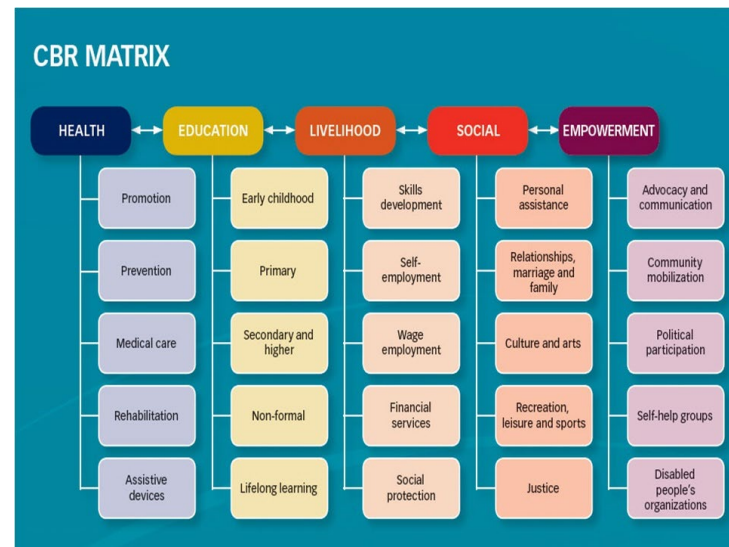
- Champion capacity building of the health, education, livelihood, social and empowerment sectors.
- Share some core aspects of a CBID strategy to achieve the UN Convention on the rights of Persons with Disabilities and 2030 Agenda.

# Training package objectives

- To better equip stakeholders at all levels to mainstream disability in their sectorial policies, programmes, budgets, resource mobilization and allocation, planning, implementation, monitoring and evaluation, and reporting routines.

# Training package

- Aligned with the rights-based approach to disability and development in line with the UN CRPD.
- Discusses the links with the 2030 Agenda and the Sustainable Development Goals (SDGs)
- Promotes the CBID strategy to realize the articles of the UN CRPD.



# Training package

- Successful implementation of a CBID strategy requires strong networking and collaboration of a range of stakeholders including duty bearers and rights holders.
- Therefore the training promotes the establishment of CBID Networks.

# Training package

- Training skills component to train trainers in skills to share the training content further in formal or informal ways.



# Training package

## Two levels:

- National / Regional / District Level
- Volunteer Level

# Introduction to the CBID Training

- Participant Manual
- Timetable
- Evaluation form



**Community Based  
Inclusive Development**